



**Product: Sil 0680/0649: Medley RAID Management Tool**

**Category: Storage**

**Department Name: [World Wide Customer Services and Support](#)**

**Title: Restoring a RAID 1 or RAID 10 Set after Replacing a Drive**

## Technical Tip Overview

The Silicon Image Sil 0680/0649 Medley Users Guide does not provide a step-by-step guide for restoring a mirrored RAID set (RAID 1 or RAID 10) after replacing a failed drive.

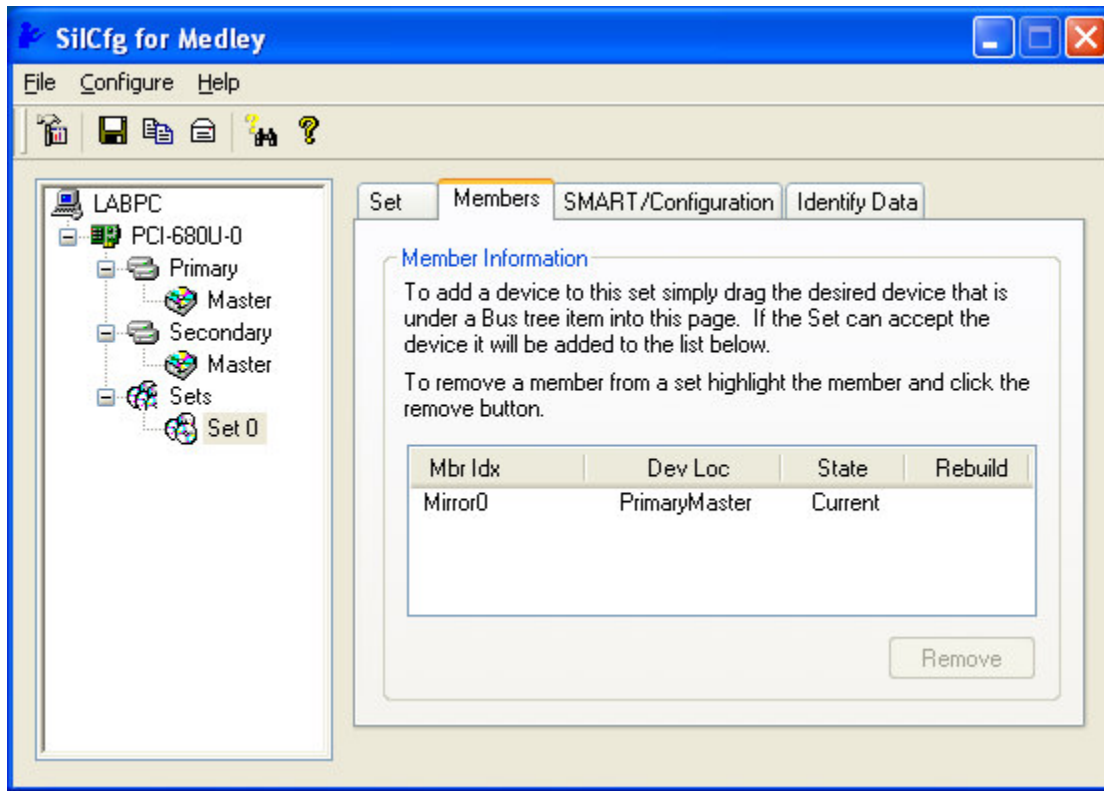
When a drive in a Medley mirrored RAID set fails and is replaced, the replacement drive is not automatically designated as a spare and used to rebuild the RAID set. You must first designate the replacement drive as a spare and then add the spare to the RAID set before the drive will be rebuilt as part of the RAID set.

To designate the drive as a spare, you can reboot, press F3 to enter the RAID BIOS menu, and then press F3 to create a spare using the replacement drive. It's also possible to designate a drive as a spare in SilCfg, the Medley GUI, by selecting the replacement drive in the left pane then clicking on the **Smart/Configuration** tab and selecting the button at the bottom to Enable Spare Drive (after reboot). You must reboot when using the GUI to create the spare.

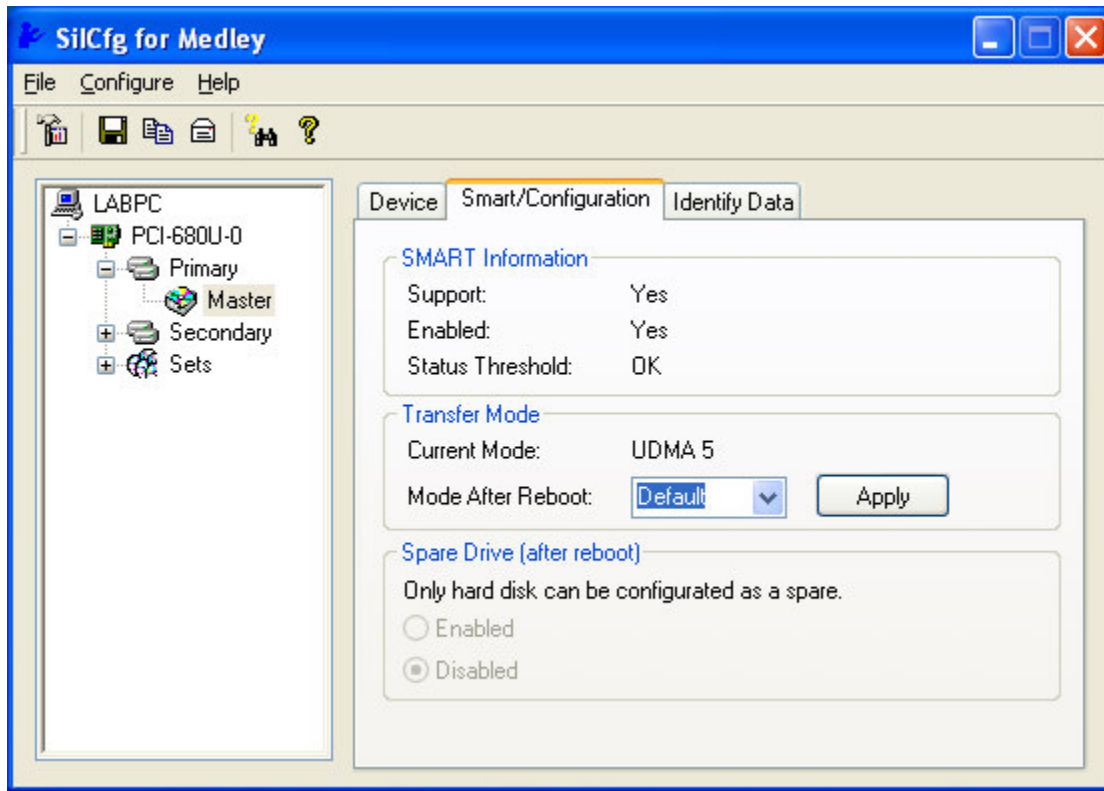
Once the drive is designated as a spare, it can be added to the existing RAID set to start the rebuild to the replacement drive.

## Resolution

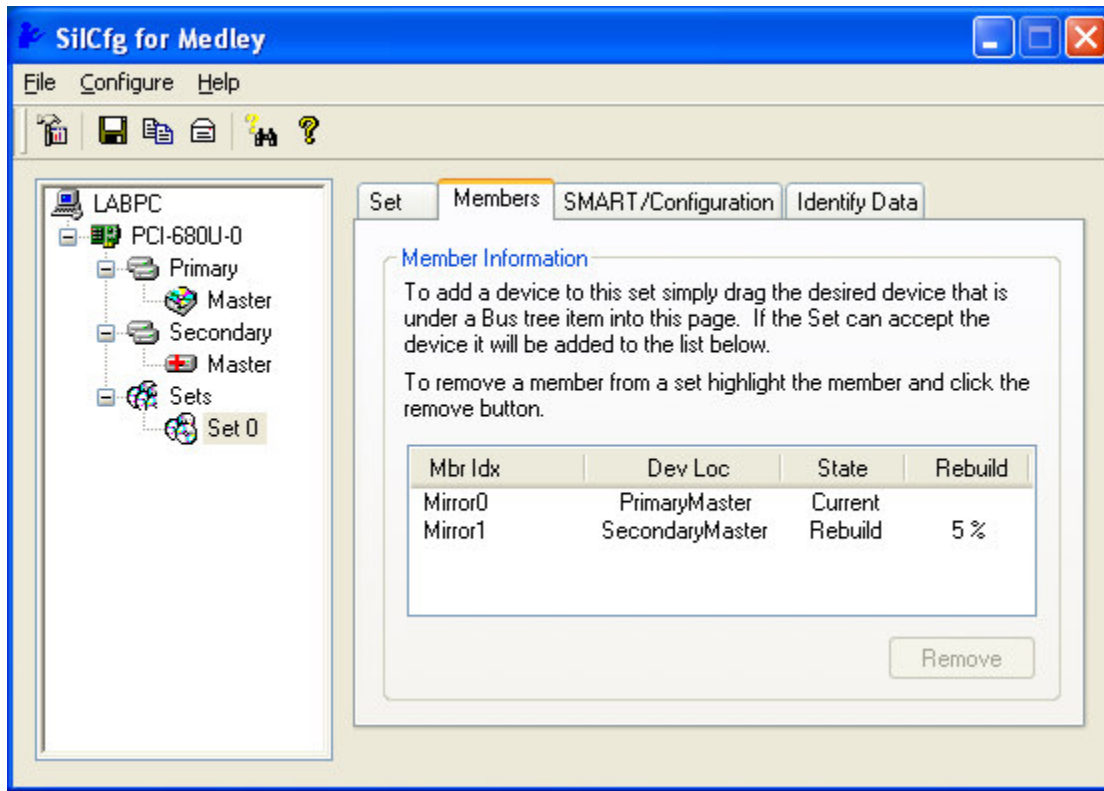
From SilCfg, a mirrored RAID set will not include the drive added as a replacement on initial reboot. The example has a simple RAID 1 mirrored set with the Primary Master as the remaining part of the original set and the Secondary Master as the replacement drive that has not yet been designated as a spare.



To designate the replacement drive as a spare, click on the drive and use the SMART/Configuration tab to Enable the drive as a spare after reboot or use the F3 selection to create a spare in the RAID BIOS menu. SilCfg won't let you designate a drive as a spare if it's already part of a RAID set as shown for the Primary Master in the example.



After reboot, add the spare drive to the RAID set by drag-n-dropping the drive onto the member list for the set. SilCfg will immediately start to rebuild the replacement drive and will pop up an event notification.



### Referenced Products

Sil 0680, Sil 0649, Medley RAID, SilCfg

### Referenced Documents

Medley ATA RAID Software User's Manual, Rev. 1.1

### Internal Documents

None

### External Documents

None



## Application Information

To obtain the most updated Technical Tips and other useful information for your design, contact your local Silicon Image sales office or visit the Silicon Image web site at [www.siliconimage.com](http://www.siliconimage.com).

## Copyright Notice

This material is copyrighted by Silicon Image, Inc. Do not reproduce, transform to any other format, or send/transmit any part of this documentation without the expressed written permission of Silicon Image, Inc.

## Trademark Acknowledgment

Silicon Image, the Silicon Image logo, TMDS®, PanelLink® and the PanelLink® Digital logo are registered trademarks of Silicon Image, Inc. PanelLink Cinema™ is a trademark of Silicon Image, Inc. HDMI™ is a trademark of the HDMI Consortium. VESA® is a registered trademark of the Video Electronics Standards Association. All other trademarks are the property of their respective holders.

## Disclaimer

This document provides technical information for the user. Silicon Image, Inc. reserves the right to modify the information in this document as necessary. The customer should make sure that they have the most recent version. Silicon Image, Inc. holds no responsibility for any errors that may appear in this document. Customers should take appropriate action to ensure their use of the products does not infringe upon any patents. Silicon Image, Inc. respects valid patent rights of third parties and does not infringe upon or assist others to infringe upon such rights.

## Revision history

REV.	DATE	ECN	TYPE	ORIGINATOR	DESCRIPTION
A00	1/11/06	Sil-TT-0012	TT	Mark Reimold	Initial release
A01	1/30/06	N/A	TT	Makr Reimold	Replace Confidential Statement with Copyright